



BOLOGNA FIERE
3|5 march 2027
25TH EDITION

DISCOVER
CONNECT
INSPIRE

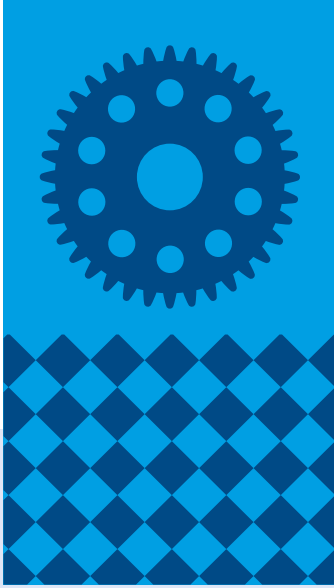


PROJECT AND MANAGEMENT



IN COLLABORATION WITH





THEMED AREAS



FOR MORE
INFO

SUBCONTRACTING SUBFORNITURA MECCANICA

Precision mechanical processing
\ Metal carpentry \ Mechanical construction
\ Fasteners \ Foundries \ Small parts
\ Wire working \ Outsourced industrial processes
\ Micro-processing

MATERIALI NON FERROSI - LEGHE

Non-ferrous materials processing
(Aluminium, Titanium, Magnesium, Light Alloys)
\ Die-casting \ Foundries \ Outsourced industrial
processes \ Technologies \ Design
\ Engineering

MECHANICS

MACCHINE E UTENSILI

Machine tools \ Equipment \ Tools \ Design software

MACCHINE LAVORAZIONE LAMIERA

Bending \ Moulding \ Cutting \ Assembly \ Welding
\ Materials \ Software

TRATTAMENTI E FINITURE

Surface treatment systems \ Furnaces
\ Galvanic finishes \ Chemical and electronic
processes \ Washing \ Metallising, Glazing,
Galvanising \ Products and accessories for
treatments \ Heat Treatments \ Coating

PLASTICS, RUBBER AND COMPOSITE

EUROSTAMPI - PLASTICA, GOMMA E COMPOSITI

Plastics, rubber and composite processing
\ Machines and plants \ Innovative materials
\ Moulding \ Extrusion \ Packaging \ Blow Moulding
\ Moulds \ Models \ Normalised parts for moulds
\ Design \ Simulation and design software
\ Micro-processing \ Auxiliary equipment

AUTOMATION AND DIGITAL FACTORY

CONTROLLO E QUALITÀ

Quality certification and control \ Metrology
\ Measurement instruments \ Laboratory tests
\ Calibration \ Analysis equipment \ Vision

AUTOMAZIONE E ROBOTICA

Assembly \ Automation and robotics \ Electronic
components manufacturing and distribution
\ Electronic Design - ED-EDA \ Electronic
subcontracting (EMS) \ Instrumentation and test
systems \ Mounting and handling \ Production and
distribution of machines for electronic manufacturing
\ Production consumables and equipment

POWER DRIVE

Mechanical power transmission systems
\ Oil-pressure \ Pneumatics \ Mechatronics
\ Motion control \ Maintenance \ Compressed air

LOGISTICA

Wrapping \ Packaging \ Handling \ Material handling
\ Lean manufacturing \ Warehouse management
software \ Supply chain management \ Outsourcing
\ Safety \ PPE

FABBRICA DIGITALE

Industrial computing \ IoT \ Industrial sensors
\ Cloud-manufacturing \ Automatic identification
technologies \ Applications, devices, instrumentation
and smart components for interpreting and
interconnecting processes

ADDITIVE MANUFACTURING

Rapid prototyping \ Rapid manufacturing \
3D printing \ Systems and services for reverse
engineering
\ Additive technology \ Materials \ Services
\ Hardware: 3D printers and scanners, accessories
\ Simulation and design software

MECSPE - 3|5 march 2027 - Bologna

PARTICIPATING TO GROW

MECSPE is the international trade fair dedicated to innovation and technologies for the manufacturing industry. Each year, at BolognaFiere, the exhibition brings together excellence from across the sector, showcasing a wide range of innovative solutions, machinery, automation, and the digitalization of production processes. Thanks to a rich program of conferences, demonstration areas, and networking spaces, MECSPE represents the ideal meeting point for companies, professionals, and decision-makers who want to remain

competitive in the era of Industry 5.0. The 2026 edition saw the participation of over 2,000 exhibiting companies and 60,581 visitors, including 13 international buyer delegations from Algeria, Bosnia and Herzegovina, Croatia, Finland, Germany, Kazakhstan, Morocco, Mexico, Poland, Sweden, Turkey, Hungary, and Uzbekistan. With more than 150 conferences, some with an international scope, MECSPE offers a unique opportunity for in-depth analysis and discussion on the most innovative topics in the manufacturing sector.

SPECIAL INITIATIVES 2026



THE DISTRIBUTED LABORATORY OF AN EVOLVING INDUSTRY

MECSPE LAB is an ecosystem that brings together high-innovation initiatives within the exhibition.

A common thread connecting special projects, demonstration areas, and in-depth sessions designed to highlight experimentation, emerging technologies, and new applications for the manufacturing industry.

ADDITIVE MANUFACTURING ARENA

A space dedicated to additive technologies, offering an immersive and highly technological experience

MECSPE ARENA

A key reference point for discussions on the future of the manufacturing industry

ELECTRONICS PRODUCTION AREA

A special area dedicated to research and innovation in the electronics field

CYBERSECURITY ARENA

An arena focused on cybersecurity issues for the manufacturing industry

PIAZZA TMP

A collective area bringing together members of the Italian Association of Plastics Technicians

START UP FACTORY

An initiative dedicated to innovative B2B startups, aimed at fostering dialogue with companies

DEMONSTRATION UNIT: AM PLANT

A demonstration area dedicated to polymer additive manufacturing



THE HUB CONNECTING TALENT AND COMPANIES

MECSPE YOUNG & CAREER connects companies with young talents ready to enter the world of manufacturing and Industry 5.0.

A dedicated area for meetings, interviews, projects, and career guidance, where students and recent graduates can discover the most in-demand skills, while companies have the opportunity to identify tomorrow's professionals

ANFIA - FORMULA SAE ITALY

ANFIA - Formula SAE Italy brings engineering students to design and build single-seater race cars

ARIANNA PROJECT

A project combining technical training and the world of work in industrial automation

INNOVATION TOUR FOR SKILLS

Guided tours reserved for exhibiting companies from Emilia-Romagna and young talents

EDUCATION HUB

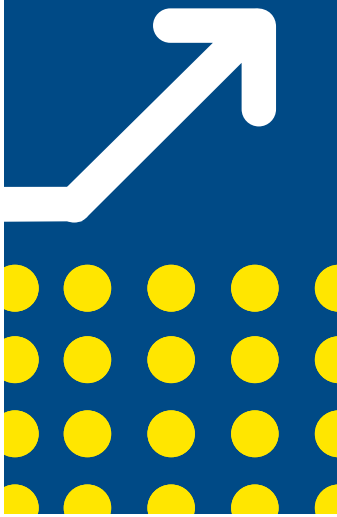
An area designed to showcase ITS students' projects together with partner companies

PLEIADES - IUAV

An area dedicated to innovative 3D printing projects by students from IUAV University of Venice

DEMONSTRATION UNIT: FROM PLASTIC TO SHAPE

A demonstration area exploring the entire production process



ADVANTAGES FOR EXHIBITORS

EXHIBITING AT MECSPE OFFERS A RANGE OF BENEFITS

Participating as an exhibitor at MECSPE means entering a dynamic ecosystem of innovation and opportunity, essential for growth and success in the manufacturing market

- **Visibility and Brand Awareness:** position your brand at the reference fair in the manufacturing industry.
- **Engagement with a specialized audience:** connect directly with potential clients and enhance existing relationships.
- **Strategic Partnerships:** join conferences and B2B meetings to expand your network and foster collaborations.
- **Business and Internationalization Opportunities:** access a global audience to grow your business internationally.
- **Updates on the latest industry innovations:** stay informed on new technologies and trends through workshops and conferences.
- **Live Demonstrations and Product Testing:** showcase your solutions through live demos and practical tests for visitors.
- **Media Coverage and Promotion:** gain extensive visibility through communication channels, including social media, newsletters and online catalogs, enhancing reach beyond the event days, thanks to the synergy with the Tecniche Nuove Group.

2026 EDITION NUMBERS

60.581
PROFESSIONAL
PARTICIPANTS

2.000+
EXHIBITING
COMPANIES

13
EXHIBITION
HALLS

18
SPECIAL
INITIATIVES

157
CONFERENCES
AND WORKSHOP

ABOUT BOLOGNA

In the heart of Motor Valley, the district home to the most important motorsport companies including Ferrari, Lamborghini, Ducati, Pagani and Maserati, Bologna, the delightful capital of Emilia-Romagna, is a vibrant city with its mix of fascinating culture, history and delicious traditional cuisine. The perfect opportunity to indulge in good food, music and art after a busy day at the fair.

HOW TO REACH BOLOGNA :

BY TRAIN

Bologna's Central Station serves as final destination for a large number of local, intercity and high-speed trains connecting neighbouring locations and the country's main cities. Visit Trenitalia or Italo websites to find out about trains inbound to Bologna. The station is also the terminus of the Marconi Express, a monorail link service to Bologna airport.

BY PLANE

Guglielmo Marconi Airport is located about 10 km from the city centre. Dozens of flights from Italian and international destinations land here daily. The airport is connected to the central railway station by the Marconi Express service, which takes only 7 minutes to cover the route. The monorail costs € 9.20 one way and € 17.00 round trip.

BY CAR

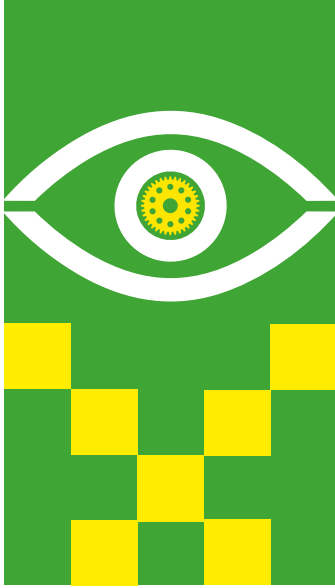
If you travel by car, you may want to know that Bologna is one of Italy's major motorway junctions, connecting the north and south of the country. Bologna is located along the A1, only 1 hour from Florence (southbound), and just over 2 hours from Milan (northbound). Bologna is also the gateway to the A14, running along the Adriatic side of the peninsula from Romagna all the way to Taranto. Another important thoroughfare is the A13 towards Veneto, connecting Bologna to cities such as Ferrara and Padua, the gateway to Venice.

PLAN YOUR STAY IN BOLOGNA

Thanks to the collaboration with Bologna Welcome, exhibitors and visitors of MECSPE, can use the online booking system of Bologna Welcome, to join the most convenient hotel rates and discounts on rail and air transport.

• **HOTEL RESERVATION** • **TRAIN OFFERS** • **FLIGHTS PROMO**

CONTACTS: tel. +39 051 6583190 - incoming@bolognawelcome.it



MECSPE - 3|5 march 2027 - Bologna

EXHIBITING AT MECSPE

The stand represents the main visual point of contact during participation in a trade fair and must be designed in line with the target audience and the corporate identity you wish to convey.

Its configuration can vary depending on exhibition objectives: from product display stands acting as showcases, to dynamic solutions featuring operating machinery and devices, up to dedicated hospitality spaces conceived as true lounge areas for meeting clients and partners in a comfortable setting.

Once the function of the stand has been defined, it will be possible to identify the type of setup best suited to enhancing your presence at the exhibition.

RAW SPACE fit-out to be carried out by the exhibitor, over 24 sqm

PRE-EQUIPPED BASIC STAND mandatory for stands up to 24 sqm

PRESTIGE PRE-FITTED STAND for stands measuring 32 sqm or more. In addition to the advantages of the standard pre-fitted ones, this type of stand allows for great customisation with a vast selection of furnishings and colours

START FORMULA 12 SQM reserved for first-time participation only

FREE SPACE

€ 222.50 per sqm

+ 8% for each additional open side

+ Essential Services* €13.00 per sqm

+ Registration Fee € 600.00

Includes: All Risks Insurance and Civil Liability (mandatory), listing in the official online catalogue, provision of promotional materials (200 digital invitations valued at €35.00 each, event banner and logo), exhibitor badges, and car parking pass).

N.B. Additional free sides: + 8% cad The different types of set-ups and any additional furniture items (display cases, chairs, storage, etc.) can be viewed in the online exhibitor section of the official fitter's website.

* Essential services: single-phase connection and testing of electrical system, with maximum power used up to 5 kW, 1 connection WI-FI internet, provision of fire extinguisher in accordance with the law, municipal charges for advertising on signs and exhibitor's company name, cleaning ordinary stand cleaning - € 13.00 sqm

STAND WITH BASIC FITTING

**SIZES STARTING
FROM 16 sqm**

The formula includes: fabric walls (3 meters), sign with business name, carpet, one table, 3 chairs, basket, spotlights, coat rack.

Basic Set-up
(to be added to the free area)

€ 99.00 sqm

STAND WITH PRESTIGE FITTING

**SIZES STARTING
FROM 32 sqm**

The formula includes: fabric walls (4 meters), carpet (with colors of your choice based on the proposed range) sign with business name, storage room, reception desk with stools, furniture, spotlights, basket, coat rack.

Prestige layout
(to be added to the free area)

€ 149.00 sqm

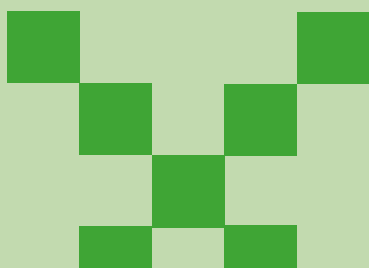
START FORMULA 12 SQM

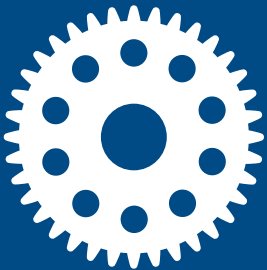
**RESERVED FOR FIRST-TIME
PARTICIPATION ONLY**

Includes: 1-sided free area, fabric walls, sign with company name, carpet, table, chairs, basket, coat rack, exhibition registration.

€ 4,614.00

ALL INCLUSIVE
(registration fee and indispensable services included)





MECSPE - 3/5 march 2027 - Bologna

COMMUNICATION

A distinctive element of Senaf's events is the media campaign. Thanks to the synergy of the Tecniche Nuove SpA publishing group, of which Senaf is a part, the event's media campaign will rely on extensive planning through the most authoritative offline and online specialized technical magazines in addition to traditional media such as local and national daily press, radio, television and social media

INTEGRATED COMMUNICATION WITH TECNICHE NUOVE GROUP EUROPE'S LARGEST PUBLISHER IN THE PROFESSIONAL FIELD



FAIRS ORGANISED BY SENAF



EXPOSANITA
MEDICAL CARE INNOVATION

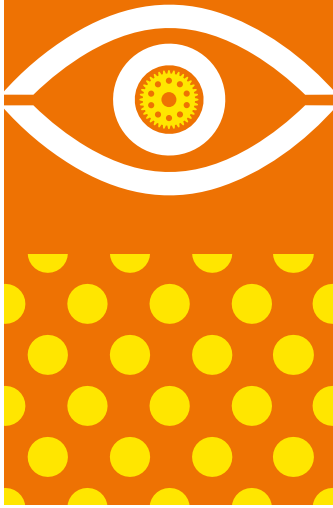


AMBIENTE LAVORO



www.senaf.it





VISITORS

60.581*

TRADE VISITORS

*VISITORS DATA 2026

USERS REACHED THROUGH THE COMMUNICATION CAMPAIGN *

SOCIAL MEDIA

15.980 LINKEDIN

9.419 INSTAGRAM

8.718 FACEBOOK

34.117

TOTAL FOLLOWERS

RADIO

47.533.920

LISTENERS

NEWSLETTER

476.230

USERS

WEBSITE

364.910

USERS

NEWSPAPERS

9.851.350

READERS

TECHNICAL PRESS (PAPER AND DIGITAL)

922.075

USERS

WEBSITE PAGE

2.852.815

VIEWS

BUSINESS SECTORS*

24273	AUTOMOTIVE
23401	MECHANICAL PROCESSING
15712	ELECTROMECHANICS
13397	AUTOMATION AND ROBOTICS
13122	ELECTRIC/ELECTRONIC
13122	MACHINE MANUFACTURING
10430	CONSUMER GOODS
7633	PLASTICS AND RUBBER PROCESSING
6782	SURFACE TREATMENTS AND FINISHES
5992	FOOD

6243 Software	2621 Recycling
6098 Electrical/Electronic	2559 Motorsport
5622 Energy	2451 Goldsmithing
5193 Aerospace	2293 Castings
4917 Transportation	2289 Raw material production
4734 Medical	2247 Construction
4722 Agriculture	2032 Nautical
4617 Household appliances	1992 Logistics
3911 Engineering firm, planning and design	1756 Power transmission
3527 Packaging	1074 Textile and Apparel
3177 Chemistry farm, petrochemical	937 Plumbing
	617 Lighting Technology

HIGH-PROFILE VISITORS

18633	BUSINESS OWNER - GENERAL MANAGER
18342	PLANNER - DESIGNER - TECHNICAL DEPT. MANAGER
8452	SALES AND MARKETING MANAGER
6143	PRODUCTION MANAGER
4495	PURCHASE MANAGER
4161	RESEARCH AND DEVELOPMENT MANAGER
3221	QUALITY CONTROL MANAGER
2199	LOGISTICS MANAGER
1324	IT MANAGER - CHIEF DIGITAL OFFICER - DIGITAL MANAGER
645	TEACHER
411	IMPORT-EXPORT MANAGER
292	JOURNALIST
152	ENERGY MANAGER EXPERT

*MECSPE DATA 2026

THE EXHIBITION CENTRE

